

COUNTY OF ANGELINA §

STATE OF TEXAS §

**ORDER OF THE COMMISSIONERS COURT
OF ANGELINA COUNTY, TEXAS
DESIGNATING AZALEA SPRINGS REINVESTMENT ZONE
FOR COMMERCIAL-INDUSTRIAL TAX ABATEMENT**

WHEREAS Section 312.401 of the Texas Tax Code provides that the commissioners court of a county by order may designate as a reinvestment zone an area of the county that does not include area in the taxing jurisdiction of a municipality;

WHEREAS the Angelina County Commissioners Court desires to designate, as a reinvestment zone for tax abatement, the area of the county described in the attached Exhibits "A-1" (Map of Zone) and "A-2" (Metes & Bounds Property Description), both of which are incorporated herein by reference;

WHEREAS the area of the county described in Exhibits "A-1" and "A-2" does not include an area in the taxing jurisdiction of a municipality;

WHEREAS the Angelina County Commissioners Court, in accordance with the requirements of Section 312.002(a) of the Texas Tax Code, has previously established guidelines and criteria governing tax abatement agreements and has passed a resolution stating that the county elects to become eligible to participate in tax abatement;

WHEREAS a public hearing on the proposed designation has been held by the Angelina County Commissioners Court, in accordance with the requirements of Section 312.401 of the Texas Tax Code, with notice of the hearing having been provided as required by law and with interested persons being allowed at the hearing to speak and present evidence for or against the designation;

WHEREAS the Angelina County Commissioners Court has also determined and hereby finds that the designation will attract major investment in the zone that will be a benefit to the property to be included in the zone and that will contribute to the economic development of the county;

NOW, THEREFORE, IT IS ORDERED AND DECREED that the area of Angelina County, Texas described in the attached Exhibits "A-1" (Map of Zone) and "A-2" (Metes & Bounds Property Description) is hereby designated as a reinvestment zone for commercial-industrial tax abatement in accordance with the provisions of Section 312.401 of the Texas Tax Code.

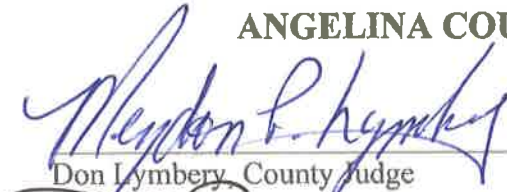
IT IS FURTHER ORDERED that this designated reinvestment zone, constituting Angelina County Reinvestment Zone Number One, shall be known as the Azalea Springs Reinvestment Zone.

IT IS FURTHER ORDERED that this designation shall take place immediately and shall be in full force and effect from the date hereof.

IT IS FURTHER ORDERED that this designation will expire five years after the date hereof, subject to the right of the commissioners court to renew the designation for additional periods not to exceed five years each, as allowed by Section 312.203 of the Texas Tax Code.

Passed, approved and adopted on this ^{22nd} 21st day of June 2021 at a regular meeting of the Commissioners Court of Angelina County, Texas, held in compliance with the Open Meetings Act, at which meeting a quorum was present and voting.

ANGELINA COUNTY COMMISSIONERS COURT


Don Lymbery, County Judge


Rodney Paulette, Commissioner, Pct. #1


Kermit Kennedy, Commissioner, Pct. #2


Terry Pitts, Commissioner, Pct. #3


Bobby Cheshire, Commissioner, Pct. #4

Attest: 
Amy Fincher, County Clerk



FILED
AT 1 O'CLOCK P M

JUN 22 2021

AMY FINCHER
County Clerk, County Court at Law
Angelina County, Texas
By 

STATE OF TEXAS
COUNTY OF ANGELINA
I hereby certify that this instrument was FILED on
the date and at the time stamped hereon by me
and was duly RECORDED in the com
RECORDS of Angelina County, Texas

COUNTY CLERK
ANGELINA COUNTY TEXAS

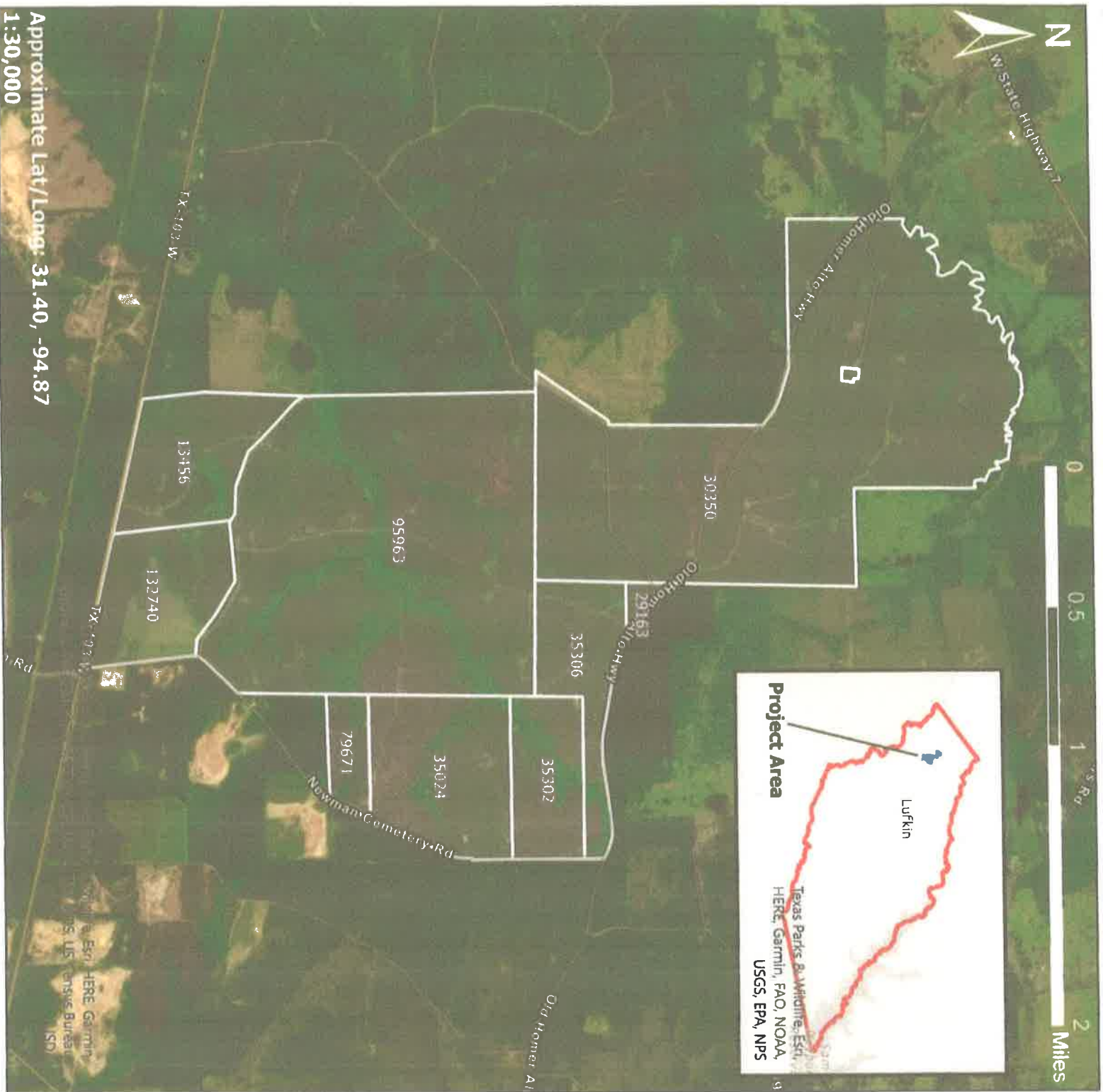
EXHIBIT "A-1"

PROPERTY DESCRIPTION

MAP OF ZONE

AZALEA SPRINGS REINVESTMENT ZONE

(ANGELINA COUNTY REINVESTMENT ZONE NUMBER ONE)



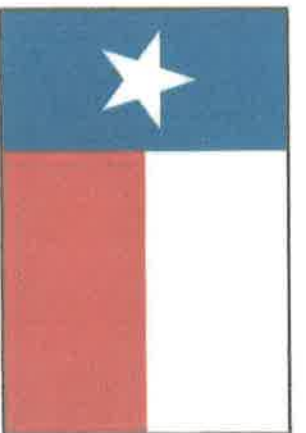
**Azalea Springs Solar Park
Project Parcels and Proposed
Reinvestment Zone**



Angelina County, TX

Legend
Project Parcels and Proposed Reinvestment Zone





Azalea Springs Solar Park Proposed Improvements

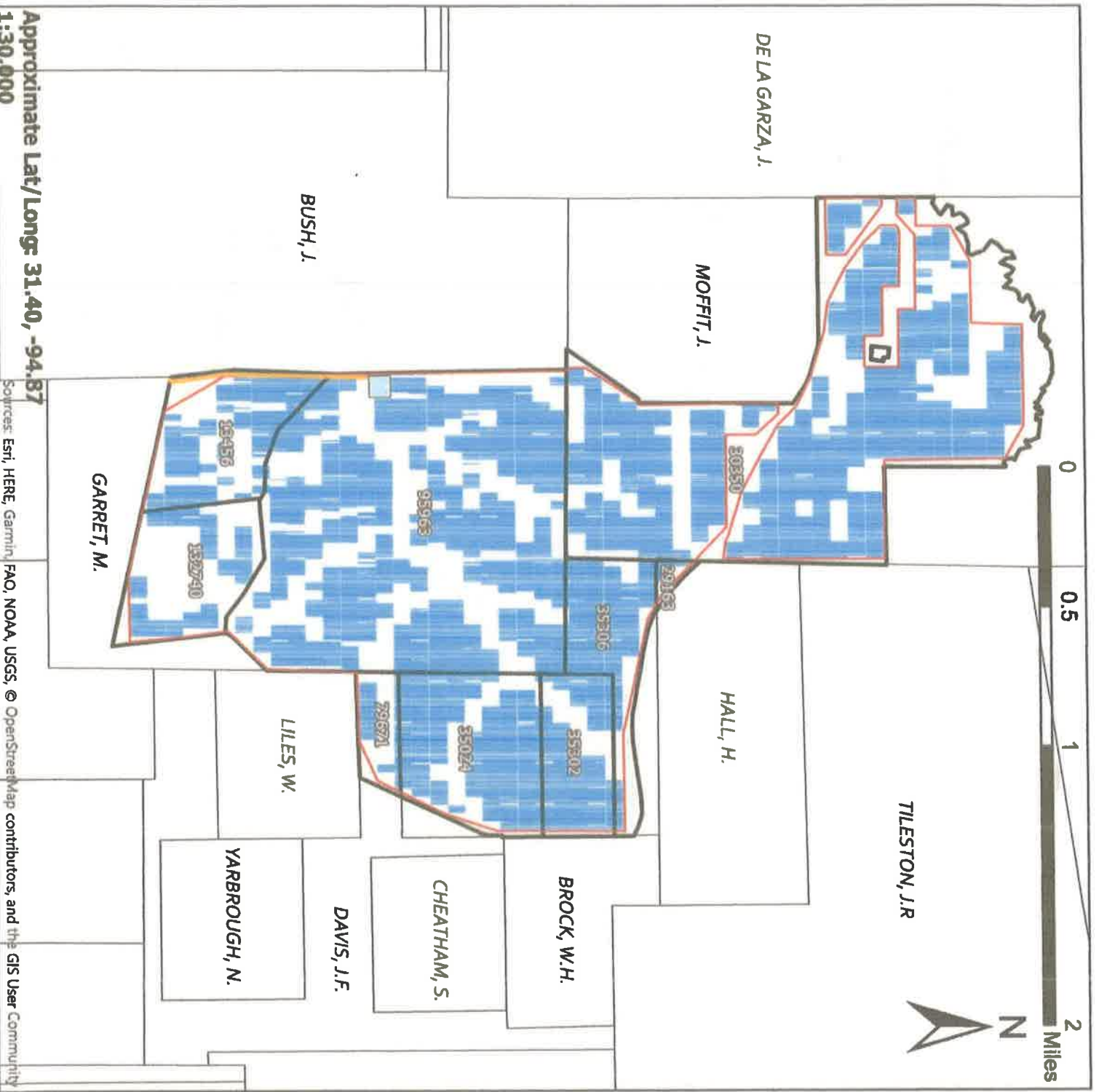


Angeline County, TX

Legend

- Texas Abstracts - Labeled by Name
- Property Parcels - Labeled by PIN
- Proposed New Solar Project Layout
- Proposed New Fencing
- Proposed New Project Substation
- Proposed New Generator Lead Line

Note: Generator lead line would continue to new interconnection switchyard owned by Oncor (utility company)



Approximate Lat/Long: 31.40, -94.87
1:30,000

Sources: Esri, HERE, Garmin, FAO, NOAA, USGS, © OpenStreetMap contributors, and the GIS User Community

EXHIBIT "A-2"

PROPERTY DESCRIPTION

METES & BOUNDS

AZALEA SPRINGS REINVESTMENT ZONE

(ANGELINA COUNTY REINVESTMENT ZONE NUMBER ONE)

Description of Proposed Reinvestment

Zone

Angelina County

THE FOLLOWING REAL PROPERTY LOCATED IN THE COUNTY OF ANGELINA, STATE OF TEXAS:

All that certain lot, tract or parcel of land situated in Angelina County, State of Texas, on the James Moffit Survey, A-422, Henry Hall Survey, A-324, B. F. Cloyd Survey, A-708, J. H. Bowman Survey, A-706, James M. Cook Survey, A-688, J. F. Davis Survey, A-1117, and the Milton Garrett Survey, A-14, and being all of Tract 41 called 60.00 acres, all of Tract 42 called 200.00 acres, a part of Tract 43 called 902.536 acres, all of Tract 44 called 112.20 acres, all of Tract 45 called 160.00 acres, all of Tract 46 called 79.79 acres, all of Tract 47 called 39.487 acres, all of Tract 48 called 60.31 acres, all of Tract 49 called 53.116 acres, all of Tract 50 called 46.984 acres, all of Tract 51 called 204.50 acres, and all of Tract 52 called 98.00 acres conveyed to Blue Sky Timber Properties, LLC, by International Paper Company, by Special Warranty Deed dated February 14, 2003, and recorded in Volume 1771, Page 144 of the Angelina County Official Records. Said lot, tract or parcel of land being more particularly described by metes and bounds as follows:

BEGINNING at a 4"X 4" concrete monument found with cap for corner at the Southwest corner of Tract 51, at the Northwest corner of the residue of the Temple-Inland Forest Products Corp. 284.460 acre tract recorded in Volume 768, Page 541 of the Angelina County Real Property Records, in the East line of the Linwood D. Hinson 160.00 acre tract recorded in Volume 399, Page 297 of the Angelina County Deed Records, in the East line of the Jesus De La Garza Survey, A-15, and in the West line of the James Moffit Survey, A-422, from WHENCE a 26" Pine bears South 77 degrees East 54.00 feet, a 30" Pine bears South 27 degrees East 35.60 feet and a 10" Hackberry bears South 57 degrees East 46.40 feet;

THENCE NORTH 03 degrees 19 minutes 31 seconds West along a marked and painted line, 2213.19 feet to corner in Bodan Creek, from WHENCE a 3" round concrete monument found on the South bank of the said creek bears South 03 degrees 19 minutes 31 seconds East 22.28 feet, and from said concrete monument a 14" Birch bears South 39 degrees 33 minutes East 24.60 feet, a 16" Water Oak bears South 61 degrees 42 minutes East 35.50 feet, and a 10" Elm bears South 42 degrees West 16.10 feet;

THENCE along the center line of the said creek with its meanders as follows:

South 70 degrees 50 minutes 15 seconds East 98.57 feet;
North 50 degrees 44 minutes 36 seconds East 101.72 feet,
North 47 degrees 04 minutes 45 seconds East 140.58 feet,
North 54 degrees 37 minutes 57 seconds West 201.72 feet,
North 26 degrees 48 minutes 49 seconds East 37.09 feet;
North 02 degrees 29 minutes 21 seconds East 57.88 feet,
North 82 degrees 36 minutes 04 seconds East 142.89 feet,
North 19 degrees 49 minutes 04 seconds West 126.19 feet,
North 11 degrees 14 minutes 08 seconds East 74.22 feet,
North 42 degrees 38 minutes 31 seconds East 117.45 feet,
North 82 degrees 22 minutes 05 seconds East 60.35 feet,
South 26 degrees 48 minutes 55 seconds East 212.56 feet,

North 26 degrees 29 minutes 54 seconds East 158.59 feet,
 North 65 degrees 23 minutes 08 seconds East 187.05 feet,
 South 86 degrees 24 minutes 25 seconds East 136.13 feet,
 North 20 degrees 42 minutes 59 seconds East 86.51 feet,
 North 22 degrees 38 minutes 44 seconds West 164.30 feet,
 North 21 degrees 47 minutes 53 seconds West 74.13 feet,
 North 50 degrees 36 minutes 50 seconds West 136.43 feet,
 North 49 degrees 27 minutes 42 seconds West 74.37 feet,
 North 22 degrees 09 minutes 51 seconds East 142.69 feet,
 North 45 degrees 25 minutes 29 seconds East 125.54 feet,
 North 07 degrees 31 minutes 08 seconds East 155.60 feet,
 North 53 degrees 06 minutes 15 seconds East 119.45 feet,
 South 03 degrees 09 minutes 56 seconds East 156.21 feet,
 South 37 degrees 50 minutes 43 seconds East 130.14 feet,
 North 16 degrees 08 minutes 51 seconds East 144.62 feet,
 North 11 degrees 35 minutes 30 seconds East 40.12 feet,
 North 25 degrees 35 minutes 23 seconds East 82.13 feet,
 South 59 degrees 30 minutes 26 seconds East 83.49 feet,
 South 25 degrees 14 minutes 03 seconds East 111.31 feet,
 North 34 degrees 59 minutes 52 seconds East 122.09 feet,
 South 42 degrees 13 minutes 51 seconds East 173.04 feet,
 North 07 degrees 36 minutes 24 seconds East 214.67 feet,
 North 36 degrees 31 minutes 07 seconds East 87.58 feet,
 North 79 degrees 07 minutes 04 seconds East 106.98 feet,
 North 20 degrees 10 minutes 23 seconds East 67.07 feet,
 North 54 degrees 25 minutes 22 seconds West 133.94 feet,
 North 15 degrees 58 minutes 08 seconds East 29.46 feet,
 North 70 degrees 42 minutes 46 seconds East 61.83 feet,
 North 59 degrees 05 minutes 16 seconds East 169.35 feet,
 South 73 degrees 59 minutes 00 seconds East 148.80 feet,
 North 44 degrees 45 minutes 07 seconds East 71.59 feet,
 North 65 degrees 41 minutes 55 seconds West 64.89 feet,
 North 48 degrees 24 minutes 09 seconds West 91.74 feet,
 North 20 degrees 24 minutes 08 seconds West 70.41 feet,
 North 71 degrees 34 minutes 44 seconds East 77.52 feet,
 South 62 degrees 56 minutes 53 seconds East 145.32 feet,
 North 89 degrees 56 minutes 06 seconds East 64.10 feet,
 North 84 degrees 46 minutes 13 seconds East 148.75 feet,
 North 33 degrees 00 minutes 57 seconds East 48.22 feet,
 North 44 degrees 15 minutes 28 seconds East 46.95 feet,
 South 84 degrees 20 minutes 20 seconds West 114.29 feet,
 North 45 degrees 54 minutes 28 seconds East 147.60 feet,
 South 57 degrees 00 minutes 39 seconds East 102.19 feet, and
 North 36 degrees 43 minutes 47 seconds East 34.70 feet

to the intersection of Bodan Creek with Long Branch;

THENCE along the center line of Long Branch with its meanders as follows:

North 38 degrees 40 minutes 56 seconds East 84.14 feet,
 North 78 degrees 17 minutes 33 seconds East 251.85 feet,
 South 50 degrees 12 minutes 59 seconds East 34.68 feet,
 North 72 degrees 45 minutes 35 seconds East 84.47 feet,

South 33 degrees 47 minutes 51 seconds East 26.69 feet,
 South 71 degrees 50 minutes 35 seconds East 165.52 feet,
 South 35 degrees 24 minutes 58 seconds East 147.84 feet,
 North 27 degrees 51 minutes 56 seconds East 73.29 feet,
 South 40 degrees 05 minutes 26 seconds East 79.80 feet,
 South 63 degrees 57 minutes 06 seconds East 134.21 feet,
 South 19 degrees 26 minutes 41 seconds East 59.20 feet,
 North 35 degrees 59 minutes 45 seconds East 110.00 feet,
 South 10 degrees 21 minutes 08 seconds East 85.65 feet,
 North 37 degrees 15 minutes 25 seconds East 39.25 feet,
 North 21 degrees 36 minutes 20 seconds East 43.81 feet,
 North 06 degrees 23 minutes 19 seconds East 59.67 feet,
 South 83 degrees 57 minutes 38 seconds East 57.01 feet,
 South 04 degrees 10 minutes 00 seconds East 54.70 feet,
 South 01 degree 37 minutes 32 seconds East 45.44 feet,
 North 78 degrees 36 minutes 58 seconds East 47.34 feet,
 South 88 degrees 13 minutes 53 seconds East 48.00 feet,
 North 11 degrees 39 minutes 17 seconds West 80.00 feet,
 South 84 degrees 59 minutes 02 seconds East 276.58 feet,
 North 43 degrees 03 minutes 37 seconds West 90.50 feet,
 South 58 degrees 35 minutes 46 seconds East 57.71 feet,
 South 80 degrees 20 minutes 00 seconds East 53.20 feet,
 South 35 degrees 10 minutes 02 seconds West 42.57 feet,
 South 25 degrees 06 minutes 45 seconds East 154.74 feet,
 South 05 degrees 38 minutes 36 seconds West 78.48 feet,
 South 45 degrees 41 minutes 52 seconds East 25.12 feet,
 North 45 degrees 39 minutes 03 seconds East 121.64 feet,
 South 12 degrees 24 minutes 40 seconds East 91.23 feet,
 South 18 degrees 04 minutes 37 seconds East 44.00 feet,
 South 07 degrees 58 minutes 14 seconds East 42.18 feet,
 South 47 degrees 35 minutes 40 seconds East 19.30 feet,
 South 63 degrees 31 minutes 12 seconds East 85.63 feet,
 South 37 degrees 49 minutes 30 seconds East 16.17 feet,
 South 70 degrees 24 minutes 55 seconds East 88.48 feet,
 South 25 degrees 27 minutes 46 seconds West 64.57 feet,
 South 18 degrees 19 minutes 11 seconds East 40.18 feet,
 South 07 degrees 22 minutes 48 seconds East 59.62 feet,
 South 21 degrees 19 minutes 48 seconds East 36.33 feet,
 South 78 degrees 51 minutes 41 seconds East 70.19 feet,
 North 23 degrees 28 minutes 05 seconds East 37.00 feet,
 South 75 degrees 41 minutes 39 seconds East 31.40 feet,
 South 36 degrees 55 minutes 39 seconds East 50.61 feet, and
 South 85 degrees 02 minutes 21 seconds East 10.48 feet

to the Northeast corner of Tract 52, from WHENCE a 3" round concrete monument (top off) found for corner on the South bank of creek bears South 03 degrees 00 minutes 45 seconds East 21.58 feet, and from said concrete monument a 14" Sweet Gum bears North 07 degrees 53 minutes West 37.90 feet, a 28" Water Oak (dead) bears South 36 degrees 13 minutes East 23.80 feet, and a 16" Pine bears stump South 61 degrees 17 minutes West 21.40 feet;

THENCE SOUTH 03 degrees 00 minutes 45 seconds East along a marked and painted line, 2234.30 feet to a 4"X 4" concrete monument with cap found for corner at the northerly Northwest corner of Tract 48, in the East line of Tract 52, and at the Southwest corner of the James C. Young 61.217 acre

tract recorded in Volume 377, Page 475 of the Angelina County Deed Records, from WHENCE a 6" Sweet Gum bears North 26 degrees West 4.60 feet, a 7" Sweet Gum bears North 70 degrees West 6.30 feet, a 14" Sweet Gum bears South 48 degrees West 21.70 feet, and a 18" Sweet Gum bears North 77 degrees East 15.40 feet;

THENCE NORTH 86 degrees 42 minutes 13 seconds East along a marked and painted line, 1621.55 feet to a 4"X 4" concrete monument with cap found for corner at the Northeast corner of Tract 48, at the Southeast corner of the said 61.217 acre tract, in the West line of the Temple Inland 831.337 acre tract recorded in Volume 768, Page 541 of the Angelina County Real Property Records, in the East line of the James Moffit Survey, A-422, and in the West line of the James R. Tileston Survey, A-604, from WHENCE a 18" Pine bears North 88 degrees East 25.90 feet, a 16" Post Oak bears South 76 degrees West 23.20 feet, and a 8" Pine bears North 20 degrees East 5.90 feet;

THENCE SOUTH 03 degrees 04 minutes 37 seconds East along a marked and painted line, 1079.23 feet to a 3" round concrete monument found for corner at the Southeast corner of Tract 48, and at the Northeast corner of Tract 42, from WHENCE a 24" Post Oak bears North 25 degrees 31 minutes East 37.30 feet, a 31" Pine stump bears North 77 degrees 41 minutes East 19.60 feet, a 26" Pine bears South 40 degrees 57 minutes West 25.90 feet, and a 9" Pine bears South 58 degrees 12 minutes West 49.65 feet;

THENCE SOUTH 02 degrees 30 minutes 59 seconds East along a marked and painted line, 1649.66 feet to a 3" round concrete monument with cap found for corner at the Northwest corner of Tract 41, and at the westerly Southwest corner of the Jim Gordon Bell 100.00 acre tract recorded in Volume 1180, Page 888 of the Angelina County Real Property Records, from WHENCE a 20" Pine bears South 81 degrees 56 minutes East 21.30 feet, a 24" Pine bears South 86 degrees 57 minutes West 26.30 feet, a 12" Sweet Gum bears North 52 degrees 50 minutes West 22.80 feet, and a 17" Pine bears South 43 degrees 58 minutes West 34.64 feet;

THENCE NORTH 86 degrees 21 minutes 30 seconds East along a marked and painted line, 855.89 feet to a 3" round concrete monument found for corner at the northerly Northeast corner of Tract 41, and at an ELL corner of the said 100.00 acre tract, from WHENCE a 7" Sweet Gum bears South 52 degrees 36 minutes East 7.20 feet, a 28" Pine bears South 39 degrees 26 minutes West 15.70 feet, a 15" Sweet Gum bears South 76 degrees 02 minutes West 26.00 feet, and a 12" Pine bears South 17 degrees 11 minutes West 19.30 feet;

THENCE SOUTH 03 degrees 43 minutes 59 seconds East along a marked and painted line, 801.39 feet to a 3" round concrete monument found for corner at an ELL corner of Tract 41, and at the southerly Southwest corner of the said 100.00 acre tract, from WHENCE a 24" Pine bears North 54 degrees 27 minutes East 22.80 feet, a 19" double Post Oak bears South 49 degrees 20 minutes East 11.10 feet, a 18" Pine bears South 40 degrees 18 minutes West 21.10 feet, and a 12" Pine bears North 55 degrees 09 minutes West 14.68 feet;

THENCE NORTH 86 degrees 15 minutes 49 seconds East along a marked and painted line, 1887.16 feet to a 5/8" iron rod set for corner at the Northeast corner of Tract 41, at the Southeast corner of the said 100.00 acre tract, and in the West line of the Edgar Louis Fry 111.58 acre Tract 2 recorded in Volume 375, Page 570 of the Angelina County Deed Records, from WHENCE a 18" Sweet Gum bears South 45 degrees 36 minutes West 43.56 feet, and a 15" Sweet Gum bears South 65 degrees 29 minutes West 43.84 feet;

THENCE SOUTH 04 degrees 53 minutes 22 seconds East along a marked and painted line, 904.89 feet to a 6" round concrete monument found for corner at the Southeast corner of Tract 41, at the Southwest corner of the said 111.58 acre Tract 2, in the South line of the Henry Hall Survey, A-324, and in the North line of the B. F. Cloyd Survey, A-708, from WHENCE a 17" Sweet Gum bears South 89 degrees 50 minutes West 11.40 feet, a 12" White Oak bears South 36 degrees 01 minute East 13.60 feet, a

14" Pine stump bears South 86 degrees 32 minutes West 3.68 feet, and a 14" Pine bears North 56 degrees 01 minute West 37.84 feet;

THENCE NORTH 86 degrees 40 minutes 24 seconds East along a marked and painted line, 951.69 feet to a 3" round concrete monument found at the Southeast corner of the said 111.58 acre Tract 2, and at the Southwest corner of the Edgar Louis Fry 12.396 acre tract recorded in Volume 675, Page 608 of the Angelina County Real Property Records, from WHENCE a 20" Pine bears North 73 degrees 27 minutes East 21.80 feet, a 10" Sweet Gum bears South 19 degrees 37 minutes East 31.80 feet, and a 24" Pine bears South 38 degrees 10 minutes West 19.10 feet;

THENCE NORTH 87 degrees 13 minutes 02 seconds East 435.77 feet to a 8" round concrete monument found for corner at the Southeast corner of the said 12.396 acre tract, and at the Southwest corner of the Edgar Louis Fry 85.84 acre Tract 1 recorded in Volume 375, Page 570 of the Angelina County Deed Records, from WHENCE a 12" Elm bears South 66 degrees 20 minutes West 7.66 feet, a 12" Sweet Gum bears North 76 degrees 40 minutes West 9.16 feet, and a 16" Elm bears North 34 degrees 30 minutes East 11.10 feet;

THENCE NORTH 87 degrees 14 minutes 30 seconds East 177.45 feet to a 8" round concrete monument found for corner at the Northeast corner of Tract 44, in the South line of the said 85.84 acre Tract 1, in the South line of the Henry Hall Survey, A-324, at the Northeast corner of the B. F. Cloyd Survey, A-708, and at the Northwest corner of the W. H. Brock Survey, A-887, from WHENCE a 12" Water Oak bears South 21.40 feet, and a 14" Elm bears North 19 degrees East 53.00 feet;

THENCE SOUTH 02 degrees 22 minutes 39 seconds East along a marked and painted line, 825.76 feet to a 5/8" iron rod set for corner in the East ditch of a County Road (called Newman Road), at the easterly Southeast corner of Tract 44, at the Northeast corner of Tract 46, at the easterly Southeast corner of the B. F. Cloyd Survey, A-708, and at the Northeast corner of the J. H. Bowman Survey, A-706, from WHENCE a 22" Pine (on ground) bears North 57 degrees 38 minutes East 6.80 feet, a 16" Pine bears North 12 degrees 17 minutes East 35.96 feet, a 18" Pine stump bears South 64 degrees 47 minutes East 13.42 feet, and a 16" Pine bears South 19 degrees 35 minutes East 23.60 feet;

THENCE SOUTH 03 degrees 00 minutes 02 seconds East along county road 1328.55 feet to a 4"X 4" concrete monument found for corner at the Southeast corner of Tract 46, at the Northeast corner of Tract 45, at the Southeast corner of the J. H. Bowman Survey, A-706, and at the Northeast corner of the J. M. Cook Survey, A-688, from WHENCE a 12" Pine bears North 66 degrees 08 minutes East 14.60 feet, a 16" Pine stump bears North 85 degrees 51 minutes East 22.10 feet, a 14" Pine stump bears North 15 degrees 52 minutes East 38.60 feet and a 12" Pine stump bears North 32 degrees 51 minutes East 33.20 feet;

THENCE SOUTH 04 degrees 21 minutes 37 seconds East along a marked and painted line, 2630.70 feet to a 3" round concrete monument found for corner at the Southeast corner of Tract 45, at the Northeast corner of Tract 50, at the Southeast corner of the J. M. Cook Survey, A-688, and at an ELL corner of the J. F. Davis Survey, A-1117, from WHENCE a 13" Pine stump bears South 11 degrees 26 minutes West 4.83 feet, a 13" Pine stump bears South 69 degrees 39 minutes West 10.69 feet, a 16" Pine stump bears North 52 degrees 01 minute West 1.77 feet, a 20" Pine bears North 34 degrees 11 minutes East 9.77 feet, a 10" Post Oak bears South 40 degrees West 11.80 feet, a 8" Red Oak bears South 36 degrees East 15.70 feet and a 5"X 5" concrete monument found bears South 11 degrees 37 minutes 42 seconds East 2.46 feet;

THENCE SOUTH 02 degrees 03 minutes 44 seconds West 718.39 feet to a 5/8" iron rod found for corner at the easterly Southeast corner of Tract 50, from WHENCE a 4.5"x 5" concrete monument found bears South 02 degrees 02 minutes 29 seconds West 60.50 feet, a 12" pine bears North 47 degrees

01 minute West 38.58 feet, a 14" Pine bears North 02 degrees 06 minutes East 28.10 feet, and a 12" Pine bears North 77 degrees 59 minutes East 30.67 feet;

THENCE SOUTH 86 degrees 14 minutes 15 seconds West along a marked and painted line, 877.06 feet to a 5/8" iron rod found for corner in the East ROW line of a County Road (called Newman Road) at an angle corner of Tract 50, from WHENCE a 12" Pine bears North 59 degrees 21 minutes West 13.10 feet, a 10" Pine bears North 60 degrees 55 minutes East 4.40 feet, and a 5" Sweet Gum bears North 63 degrees 51 minutes East 16.40 feet;

THENCE SOUTH 18 degrees 25 minutes 42 seconds West along a marked and painted line, the East ROW line of the said road 64.84 feet to a 5/8" iron rod found for corner at the southerly Southeast corner of Tract 50, from WHENCE a 3.5"x 4" concrete monument found bears North 85 degrees 39 minutes 48 seconds East 155.11 feet, a 7" Sweet Gum bears South 34 degrees 30 minutes East 10.28 feet, a 12" Pine bears South 70 degrees 07 minutes West 10.21 feet, and a 7" Pine bears North 75 degrees 27 minutes West 5.30 feet;

THENCE SOUTH 85 degrees 40 minutes 41 seconds West along a marked and painted line, 492.39 feet to a 3.5"x 4" concrete monument found for corner at an angle corner in the South line of Tract 50, at the Northwest corner of the Carl F. Rode 18.244 acre tract recorded in Volume 269, Page 507 of the Angelina County Deed Records, and at the Northeast corner of the E. V. Johnson 26.98 acre tract recorded in Volume 1272, Page 87 of the Angelina County Real Property Records, from WHENCE a 12" Post Oak stump hole bears North 16 degrees 30 minutes East 2.86 feet, a 12" Sweet Gum bears South 53 degrees West 12.40 feet and a 12" Pine bears South 45 degrees East 4.65 feet;

THENCE SOUTH 85 degrees 36 minutes 13 seconds West along a marked and painted line, 1261.29 feet to a 3" round concrete monument found for corner at the Southwest corner of Tract 50, at the Northwest corner of the said 26.98 acre tract, at the westerly Southwest corner of the J. F. Davis Survey, A-1117, at the Northwest corner of the Martin Newman Survey, A-696, and in the East line of the Milton Garrett Survey, A-14, from WHENCE a 12" Elm bears South 30 degrees West 19.90 feet, a 5" Dogwood bears North 16 degrees 49 minutes East 18.10 feet, a 5" Sweet Gum bears North 18 degrees 06 minutes East 22.70 feet, a 14" Red Oak (snag) bears North 30 degrees 16 minutes East 23.90 feet, and a 13" Hickory (leaning West) bears North 07 degrees 33 minutes West 51.10 feet;

THENCE SOUTH 01 degree 47 minutes 19 seconds East along a marked and painted line, 1317.66 feet to a 3" round concrete monument found for corner at the Southwest corner of the Newman Cemetery Association 2.00 acre tract recorded in Volume 493, Page 439 of the Angelina County Deed Records, from WHENCE a 10" Post Oak bears South 30 degrees 09 minutes East 20.61 feet, a 10" Sweet Gum bears South 19 degrees 10 minutes East 17.60 feet, a 7" Sweet Gum bears South 06 degrees 21 minutes East 24.30 feet, and a 17" Sweet Gum bears South 26 degrees 45 minutes West 28.30 feet;

THENCE SOUTH 01 degree 47 minutes 13 seconds East along a marked and painted line, 327.89 feet to a 1/2" iron pipe found for corner in the South ROW line of a County Road (called Newman Road), and at the North corner of the Jim R. Alexander 27.64 acre tract recorded in Volume 1479, Page 53 of the Angelina County Official Records, from WHENCE a 1/2" iron rod found bears North 01 degree 37 minutes 43 seconds West 57.81 feet, and a 1/2" iron rod found bears South 00 degrees 59 minutes 02 seconds East 21.84 feet;

THENCE along the Northwest line of the said 27.64 acre tract and the Southeast line of the said county road, South 37 degrees 42 minutes 16 seconds West 429.25 feet to a 5/8" iron rod set for corner, South 38 degrees 02 minutes 49 seconds West 194.04 feet to a 1/2" iron pipe found for corner, South 37 degrees 45 minutes 33 seconds West 134.20 feet to a 5/8" iron rod set for corner, South 31 degrees 27 minutes 38 seconds West 104.04 feet to a 1/2" iron pipe found for corner, and South 19 degrees 57 minutes 03 seconds West 62.37 feet to a 1/2" iron pipe found for corner;

THENCE in a northwesterly direction along and with a timber haul road:

North 87 degrees 23 minutes 41 seconds West 238.17 feet to a 5/8" iron rod set for corner,
 North 51 degrees 20 minutes 00 seconds West 520.00 feet to a 5/8" iron rod set for corner,
 North 58 degrees 44 minutes 00 seconds West 665.00 feet to a 5/8" iron rod set for corner,
 South 81 degrees 15 minutes 00 seconds West 935.00 feet to a 5/8" iron rod set for corner,
 North 60 degrees 38 minutes 00 seconds West 185.00 feet to a 5/8" iron rod set for corner,
 South 88 degrees 40 minutes 00 seconds West 435.00 feet to a 5/8" iron rod set for corner,
 North 69 degrees 27 minutes 00 seconds West 610.00 feet to a 5/8" iron rod set for corner,
 North 42 degrees 16 minutes 00 seconds West 300.00 feet to a 5/8" iron rod set for corner,
 North 45 degrees 57 minutes 00 seconds West 860.00 feet to a 5/8" iron rod set for corner, and

- : North 35 degrees 52 minutes 00 seconds West 314.40 feet to a 5/8" iron rod set for corner with cap stamped Carter 1935 in the West line of Tract 43, in the West line of the Milton Garrett Survey, A-14, in the East line of the Temple Industries Inc. 160.00 acre first tract recorded in Volume 320, Page 597 of the Angelina County Deed Records, and in the East line of the John Bush Survey, A-7, from WHENCE a 4"x 4" concrete monument found bears South 00 degrees 08 minutes 02 seconds East 1898.90 feet, a 10" Pine bears North 43 degrees West 26.45 feet, a 10" Pine bears North 85 degrees West 19.30 feet, and a 6" Pine bears South 33 degrees West 5.60 feet;

THENCE NORTH 00 degrees 08 minutes 02 seconds West along a marked and painted line, 769.10 feet to a 4"x 4" concrete monument found for corner at the Northeast corner of the said 160.00 acre first tract, and at the Southeast corner of the Temple-Eastex, Inc., 414.43 acre tract recorded in Volume 652, Page 6 of the Angelina County Real Property Records, from WHENCE a 28" Post Oak bears South 46 degrees 22 minutes West 37.50 feet, a 30" Pine bears South 11 degrees 20 minutes West 35.00 feet, a 24" Black Gum bears South 76 degrees 02 minutes East 7.70 feet, and a 17" Elm stump hole bears North 60 degrees 09 minutes East 4.85 feet;

THENCE NORTH 04 degrees 38 minutes 14 seconds West along a marked and painted line, 3454.90 feet to a 4" round concrete monument found for corner at the Northwest corner of Tract 43, in the South line of Tract 49, at the Northeast corner of the said 414.43 acre tract, at the Northwest corner of the Milton Garrett Survey, A-14, in the South line of the James Moffit Survey, A-422, and at the Northeast corner of the John Bush Survey, A-7, from WHENCE a 10" Pine bears South 64 degrees 20 minutes East 2.75 feet, a 24" Pine bears North 02 degrees 02 minutes West 33.60 feet, and a 24" Pine bears South 45 degrees 55 minutes East 24.80 feet;

THENCE SOUTH 86 degrees 46 minutes 03 seconds West along a marked and painted line, 114.44 feet to a 1/2" iron rod found for corner at the Southwest corner of Tract 49, and at the Southeast corner of the residue of the Southern Pine Lumber Company 269.00 acre tract recorded in Volume 117, Page 119 of the Angelina County Deed Records, from WHENCE a 6" Pine bears North 61 degrees 42 minutes East 17.65 feet, a 7" Pine bears South 27 degrees 24 minutes East 24.10 feet, and a 22" Pine bears North 86 degrees 11 minutes West 9.60 feet;

THENCE NORTH 24 degrees 52 minutes 57 seconds East 1557.79 feet to a 3" round concrete monument found (top gone) for corner at the Northwest corner of Tract 49, at the Southwest corner of Tract 42, and at an angle corner of the residue of the said 269.00 acre tract, from WHENCE a 10" Post Oak bears North 33 degrees 57 minutes West 27.90 feet, a 14" Pine bears North 75 degrees 42 minutes West 16.70 feet, a 8" Pine stump bears South 04 degrees 33 minutes West 16.62 feet, a 18" Pine bears South 61 degrees 28 minutes West 19.50 feet, and a 10" Post Oak bears North 33 degrees 57 minutes West 27.90 feet;

THENCE NORTH 03 degrees 09 minutes 25 seconds West along a marked and painted line, 2865.10 feet to a 1/2" iron rod found for corner at the southerly Southeast corner of Tract 48, in the North ROW line of a dirt road, and at the Northeast corner of the residue of the Temple-Inland Forest Products Corp. 284.460 acre tract recorded in Volume 768, Page 541 of the Angelina County Real Property Records, from WHENCE a 8" Post Oak bears South 48 degrees 30 minutes West 2.52 feet, a 16" Post Oak bears South 85 degrees 10 minutes West 6.80 feet, and a 5" Pine bears North 24 degrees 44 minutes West 13.85 feet;

THENCE along the North ROW line of the said dirt road and along a marked and painted line:

North 52 degrees 51 minutes 02 seconds West 184.18 feet to a 5/8" iron rod set for corner,
 North 53 degrees 23 minutes 18 seconds West 125.80 feet to a 5/8" iron rod set for corner,
 North 57 degrees 33 minutes 45 seconds West 63.94 feet to a 5/8" iron rod set for corner,
 North 62 degrees 28 minutes 11 seconds West 54.31 feet to a 5/8" iron rod set for corner,
 North 67 degrees 11 minutes 53 seconds West 102.21 feet to a 5/8" iron rod set for corner,
 North 72 degrees 33 minutes 38 seconds West 91.88 feet to a 5/8" iron rod set for corner,
 North 73 degrees 25 minutes 00 seconds West 88.05 feet to a 5/8" iron rod set for corner,
 North 73 degrees 12 minutes 43 seconds West 432.98 feet to a 5/8" iron rod set for corner, and

North 74 degrees 58 minutes 01 second West 89.75 feet to corner in a 14" Pine tree found at the Southwest corner of Tract 48, in the South line of Tract 51, and at an angle corner of the said 284.460 acre tract, from WHENCE a 8" Pine bears North 43 degrees 24 minutes West 31.22 feet, and a 8" Sweet Gum bears North 76 degrees 47 minutes East 30.44 feet;

THENCE SOUTH 86 degrees 41 minutes 45 seconds West along a marked and painted line, along the South line of Tract 51, and along the North line of the said 284.460 acre tract, 2218.14 feet to the place of beginning and containing 1809.439 acres of land, save and except 1.473 acres of land lying within the Bodan Cemetery described by maps and bounds as follows:

BEGINNING at a chain link fence corner found for corner at the occupied Southeast corner of the said cemetery and being North 14 degrees 06 minutes 39 seconds West 987.53 feet from the Southeast corner of Tract 51, from WHENCE a 7" Sweet Gum bears North 71 degrees 38 minutes East 13.60 feet, a 12" Pine bears South 78 degrees 59 minutes East 20.10 feet, a 12" Pine snag bears South 69 degrees 21 minutes East 18.70 feet, and a 16" Post Oak bears North 03 degrees West 28.40 feet;

THENCE NORTH 86 degrees 51 minutes 38 seconds West 215.46 feet to a chain link fence corner found for corner, from WHENCE a 10" Pine bears South 68 degrees West 26.90 feet, and a 20" Post Oak bears North 29 degrees East 34.70 feet;

THENCE NORTH 07 degrees 05 minutes 00 seconds East 331.59 feet to a chain link fence corner found for corner, from WHENCE a 28" Post Oak bears South 59 degrees 11 minutes West 20.50 feet, a 28" Pine bears South 75 degrees 52 minutes West 39.40 feet, a 12" Hickory bears North 28 degrees 47 minutes West 27.60 feet, and a 28" Pine bears North 07 degrees 16 minutes East 9.90 feet;

THENCE SOUTH 81 degrees 29 minutes 17 seconds East 152.35 feet to a chainlink fence corner found for corner, from WHENCE a 24" Sweet Gum bears North 60 degrees 08 minutes West 50.55 feet, and a 18" Pine bears North 59 degrees 37 minutes East 14.00 feet;

THENCE SOUTH 03 degrees 02 minutes 22 seconds West 91.61 feet to a chainlink fence corner found for corner, from WHENCE a 13" Pine stump bears North 21 degrees 22 minutes East 29.90 feet, a 20" Pine stump bears North 66 degrees 22 minutes East 41.75 feet, a 12" Cedar (unmarked) bears South 57 degrees West 5.70 feet, and a 28" Post Oak (unmarked) bears North 50 degrees West 9.80 feet;

THENCE SOUTH 87 degrees 14 minutes 43 seconds East 59.26 feet to a chainlink fence corner found for corner, from WHENCE a 26" Post Oak (unmarked) bears South 40 degrees West 34.40 feet, and a 18" Post Oak (unmarked) bears South 64 degrees West 42.80 feet;

THENCE SOUTH 07 degrees 49 minutes 12 seconds West 226.08 feet to the place of beginning and containing 1.473 acres of land, leaving a net of 1807.966 acres of land. All trees marked X with two hacks above and below the X, and distance to center unless otherwise noted.

PIN: 0014-020-001-003-00

PIN: 0324-004A-005-000-00

PIN: 0422-004-010-000-00

PIN: 0688-020-001-000-00

PIN: 0706-020-001-000.00

PIN: 0708-020-001-000-00

PIN: 1117-020-001-001-00

SAVE & EXCEPT THE FOLLOWING (see following 4 pages):

BEGINNING at a 8" round concrete monument found for corner at the Easterly Northeast corner of the called 1807.966 acre tract, in the South line of the Edgar Louis Fry 85.84 acre Tract 1 recorded in Volume 375, Page 570 of the Angelina County Deed Records, in the South line of the Henry Hall Survey, A-324, at the Northeast corner of the B. F. Cloyd Survey, A-708, and at the Northwest corner of the W. H Brock Survey, A-887, from **WHENCE** a 12" Water Oak bears South 21 40 feet, and a 14" Elm bears North 19 degrees East 53 00 feet;

THENCE SOUTH 02 degrees 22 minutes 39 seconds East along a marked and painted line, 359.97 feet to a 5/8" iron rod set for corner;

THENCE NORTH 64 degrees 35 minutes 34 seconds West 177.93 feet to a 5/8" iron rod set for corner;

THENCE NORTH 72 degrees 38 minutes 42 seconds West 152.96 feet to a 5/8" iron rod set for corner;

THENCE NORTH 83 degrees 22 minutes 42 seconds West 76 97 feet to a 5/8" iron rod set for corner;

THENCE SOUTH 84 degrees 20 minutes 10 seconds West 188.19 feet to a 5/8" iron rod set for corner;

THENCE SOUTH 78 degrees 06 minutes 10 seconds West 997.00 feet to a 5/8" iron rod set for corner;

THENCE NORTH 04 degrees 53 minutes 22 seconds West 369.35 feet to 6" round concrete monument found for corner at an ELL. corner of the called 1807.966 acre tract, at the Southwest corner of the Edgar Louis Fry 111.58 acre Tract 2 recorded in Volume 375, Page 570 of the Angelina County Deed Records, in the South line of the Henry Hall Survey, A-324, and in the North line of the B. F. Cloyd Survey, A-708, from **WHENCE** a 17" Sweet Gum bears South 89 degrees 50 minutes West 11.40 feet, a 12" White Oak bears South 36 degrees 01 minute East, 13.60 feet, a 14" Pine stump bears South 86 degrees 32 minutes West 3.68 feet, and a 14" Pine bears North 56 degrees 01 minute West 37.84 feet;

THENCE NORTH 86 degrees 40 minutes 24 seconds East along a marked and painted line, 951.69 feet to a 3" round concrete monument found for corner at the Southeast corner of the said 111.58 acre Tract 2, and at the Southwest corner of the Edgar Louis Fry 12.396 acre tract recorded in Volume 675, Page 608 of the Angelina County Real Property Records, from **WHENCE** a 20" Pine bears North 73 degrees 27 minutes East 21 80 feet, a 10" Sweet Gum bears South 19 degrees 37 minutes East 31.80 feet, and a 24" Pine bears South 38 degrees 10 minutes West 19.10 feet;

THENCE NORTH 87 degrees 13 minutes 02 seconds East along a marked and painted line 435.77 feet to a 8" round concrete monument found for corner at the Southeast corner of the said 12.396 acre tract, and at the Southwest corner of the said Edgar Louis Fry 85.84 acre Tract 1, from **WHENCE** a 12" Elm bears South 66 degrees 20 minutes West 7 66 feet, a 12" Sweet Gum bears North 76 degrees 40 minutes West 9 16 feet, and a 16" Elm bears North 34 degrees 30 minutes East 11.10 feet;

THENCE NORTH 87 degrees 14 minutes 30 seconds East along a marked and painted line 177.45 feet to the place of beginning and containing 10.001 acres of land.

Containing approximately 10.001 acres of land

AND

All that certain lot, tract or parcel of land situated in Angelina County, State of Texas, on the J. F. Davis Survey, A-1117, and the J. M. Cook Survey, A-688, and being a part of the called 1807.966 acre tract conveyed to Brushy Creek Timber XII, LLC, by Blue Sky Timber Properties, LLC, by Special Warranty Deed dated March 22, 2004 and recorded in Volume 194 7, Page 254, of the Angelina County Real Property Records. Said lot, tract or parcel of land being more particularly described by metes and bounds as follows:

BEGINNING at a 5/8" iron rod found for corner at the easterly Southeast corner of the called 1807.966 acre tract, from **WHENCE** a 4.5"x 5" concrete monument found bears South 02 degrees 02 minutes 29 seconds West 60.50 feet, a 12" pine bears North 47 degrees 01 minute West 38.58 feet, a 14" Pine bears North 02 degrees 06 minutes East 28.10 feet, and a 12" Pine bears North 77 degrees 59 minutes East 30.67 feet;

THENCE SOUTH 86 degrees 14 minutes 15 seconds West along a marked and painted line, 877.06 feet to a 5/8" iron rod found for corner in the East ROW line of a County Road (called Newman Road) and at an angle corner of the called 1807.966 acre tract, from **WHENCE** a 12" Pine bears North 59 degrees 21 minutes West 13.10 feet, a 10" Pine bears North 60 degrees 55 minutes East 4.40 feet, and a 5" Sweet Gum bears North 63 degrees 51 minutes East 16.40 feet;

THENCE SOUTH 18 degrees 25 minutes 42 seconds West along a marked and painted line, the East ROW line of the said county road 64.84 feet to a 5/8" iron rod found for corner at an angle corner of the called 1807.966 acre tract, from **WHENCE** a 3.5"x 4" concrete monument found bears North 85 degrees 39 minutes 48 seconds East 155.11 feet, a 7" Sweet Gum bears South 34 degrees 30 minutes East 10.28 feet, a 12" Pine bears South 70 degrees 07 minutes West 10.21 feet, and a 7" Pine bears North 75 degrees 27 minutes West 5.30 feet;

THENCE SOUTH 85 degrees 40 minutes 41 seconds West along a marked and painted line 32.14 feet to corner in the said county road at the Southwest corner of this tract;

THENCE along the centerline of the said county road, North 22 degrees 12 minutes 08 seconds East 4.48 feet, North 18 degrees 35 minutes 01 seconds East 944.66 feet, North 18 degrees 10 minutes 10 seconds East 1485.64 feet, North 12 degrees 14 minutes 01 seconds East 74.84 feet, North 04 degrees 59 minutes 18 seconds East 74.36 feet, North 00 degrees 70 minutes 09 seconds East 70.85 feet, North 01 degree 33 minutes 04 seconds West 153.66 feet and North 02 degrees 52 minutes 51 seconds West 10.90 feet to the Northwest corner of this tract;

THENCE NORTH 85 degrees 38 minutes 23 seconds East 24.86 feet to a ½" iron rod found for corner in the East line of the called 1807.966 acre tract, at the Northwest corner of the residue of the Temple-Inland 594.99 acre tract recorded in Volume 768, Page 341, of the Angelina County Real Property Records, at the Southwest corner of the Susan Sloan Altman 65.308 acre tract recorded in Volume 996, Page 334, of the Angelina County Real Property Records, at the northerly Northwest corner of the J. F. Davis Survey, A-1117, at the Southwest corner of the W. H. Brock Survey, A-887, and in the East line of the J. M. Cook Survey, A-688, from WHENCE a 20" Pine bears North 02 degrees West 5.60 feet and a 12" Pine bears North 59 degrees West 11.70 feet;

THENCE SOUTH 04 degrees 21 minutes 37 seconds East along a marked and painted line, 1860.45 feet to a 3" round concrete monument found for corner at an angle corner of the called 1807.966 acre tract, at the Southeast corner of the J. M. Cook Survey, A-688, and at an ELL corner of the J. F. Davis Survey, A-1117, from WHENCE a 13" Pine stump bears South 11 degrees 26 minutes West 4.83 feet, a 13" Pine stump bears South 69 degrees 39 minutes West 10.69 feet, a 16" Pine stump bears North 52 degrees 01 minute West 1.77 feet, a 20" Pine bears North 34 degrees 11 minutes East 9.77 feet, a 10" Post Oak bears South 40 degrees West 11.80 feet, a 8" Red Oak bears South 36 degrees East 13.70 feet and a 5"X 5" concrete monument found bears South 11 degrees 37 minutes 42 seconds East 2.46 feet;

THENCE SOUTH 02 degrees 03 minutes 44 seconds West along a marked and painted line, 718.39 feet to the place of beginning and containing 26.372 acres of land. All trees marked X with two blacks above and below the X, and distance to center unless otherwise noted.

AND

BEGINNING at a 3" round concrete monument with cap found for corner at an angle corner of the called 1807.966 acre tract, at the westerly Southwest corner of the Brushy Creek Timber Company, Inc., called 100.00 acre tract recorded in Volume 2164, Page 5, of the Angelina County Real Property Records, in the East line of the James Moffit Survey, A-422, and in the West line of the Henry Hall Survey, A-324, South 02 degrees 30 minutes 59 seconds East 1028.98 feet from the Northwest corner of same, from WHENCE a 20" Pine bears South 81 degrees 56 minutes East 21.30 feet, a 24" Pine bears South 86 degrees 57 minutes West 26.30 feet, a 12" Sweet Gum bears North 52 degrees 50 minutes West 22.80 feet, and a 17" Pine bears South 43 degrees 58 minutes West 34.64 feet;

THENCE NORTH 86 degrees 21 minutes 30 seconds East along a marked and painted line, 855.89 feet to a 3" round concrete monument found for corner at an ELL corner of the called 1807.966 acre tract, and at an ELL corner of the said 100.00 acre tract, from WHENCE a 7" Sweet Gum bears South 52 degrees 36 minutes East 7.20 feet, a 28" Pine bears South 39 degrees 26 minutes West 15.70 feet, a 15" Sweet Gum bears South 76 degrees 02 minutes West 26.00 feet, and a 12" Pine bears South 17 degrees 11 minutes West 19.30 feet;

THENCE SOUTH 03 degrees 43 minutes 59 seconds East along a marked and painted line, 801.39 feet to a 3" round concrete monument found for corner at an ELL corner of the called 1807.966 acre tract, and at the southerly Southwest corner of the said 100.00 acre tract, from WHENCE a 24" Pine bears North 54 degrees 27 minutes East 22.80 feet, a 19" double Post Oak bears South 49 degrees 20 minutes East 11.10 feet, a 18" Pine bears South 40 degrees 18 minutes West 21.10 feet, and a 12" Pine bears North 55 degrees 09 minutes West 14.68 feet;

THENCE NORTH 86 degrees 15 minutes 49 seconds East along a marked and painted line, 1887.16 feet to a 5/8" iron rod found for corner at an ELL corner of the called 1807.966 acre tract, at the Southeast corner of the said 100.00 acre tract, and in the West line of the Edgar Louis Fry 111.58 acre Tract 2 recorded in Volume 375, Page 570 of the Angelina County Deed Records, from WHENCE a 18" Sweet Gum bears South 45 degrees 36 minutes West 43.56 feet, and a 15" Sweet Gum bears South 65 degrees 29 minutes West 43.84 feet;

THENCE SOUTH 04 degrees 53 minutes 22 seconds East along a marked and painted line, at 904.89 feet pass a 6" round concrete monument found at an ELL corner of the called 1807.966 acre tract, the Southwest corner of the said 111.58 acre Tract 2, the South line of the Henry Hall Survey, A-324, and the North line of the B. F. Cloyd Survey, A-708, from WHENCE a 17" Sweet Gum bears South 89 degrees 50 minutes West 11.40 feet, a 12" White Oak bears South 36 degrees 01 minute East 13.60 feet, a 14" Pine stump bears South 86 degrees 32 minutes West 3.68 feet, and a 14" Pine bears North 56 degrees 01 minute West 37.84 feet and continuing in all 1274.24 feet to a 5/8" iron rod set for corner in the North ROW line of a woods road;

THENCE along the North ROW line of the said woods road, South 80 degrees 27 minutes 59 seconds West 282.22 feet to a 5/8" iron rod set for corner,
 North 89 degrees 13 minutes 07 seconds West 166.97 feet to a 5/8" iron rod set for corner,
 North 81 degrees 56 minutes 21 seconds West 1102.52 feet to a 5/8" iron rod set for corner,
 North 76 degrees 11 minutes 38 seconds West 219.94 feet to a 5/8" iron rod set for corner;
 North 67 degrees 57 minutes 12 seconds West 196.24 feet, to a 5/8" iron rod set for corner,
 North 53 degrees 07 minutes 37 seconds West 478.19 feet to a 5/8" iron rod set for corner,
 North 48 degrees 36 minutes 19 seconds West 329.21 feet to a 5/8" iron rod set for corner,
 North 43 degrees 48 minutes 30 seconds West 221.30 feet to a 5/8" iron rod set for corner, and
 North 41 degrees 19 minutes 24 seconds West 222.31 feet to a 5/8" iron rod set for corner in the West line of the Henry Hall Survey, A-324, and in the East line of the James Moffit Survey, A-422;

THENCE NORTH 02 degrees 30 minutes 59 seconds West along the West line of the Henry Hall Survey, A-324, and the East line of the James Moffit Survey, A-422, 825.19 feet to the place of beginning Containing approximately 76.943 acres of land.

Description of Proposed

Reinvestment Zone Continued

THE FOLLOWING REAL PROPERTY LOCATED IN THE COUNTY OF ANGELINA, STATE OF TEXAS:

BEING all that certain tract or parcel of land lying and situated in Angelina County, Texas, out of the MILTON GARRETT SURVEY, ABSTRACT NO. 14, being all a part or portion of that certain 234.16 acre tract described in a deed from Red River Nacogdoches TRS LP dated November 3, 2010 and recorded as Document No. 201-00278599 of the Deed Records of Angelina County, Texas, to which reference is hereby made for any and all purposes, and the said tract or parcel being described by metes and bounds as follows, to wit:

BEGINNING at the Southwest corner of the aforesaid referred to 234.16 acre tract and the Southeast corner of that certain 21.81 acre tract described in Contract of Sale and Purchase from The Veterans Land Board of Texas and Larry R. Callison, dated October 31, 1985 and recorded in Volume 609 on Page 371 of the Deed Records of Angelina County, Texas, a concrete monument found for corner in the North right-of-way line of State Highway No. 103 (volume 85, page 233), said monument witnessed by a 14" Hickory (obt) bearing N 42° 40' E 21.14 feet and a concrete monument bearing N 00° 51' 00" W 3.34 feet;

THENCE two calls with the West boundary line of the said 234.16 acre tract as follows:

- (1) N 07° 54' 43" W with the East boundary line of said 21.81 acre tract, at 1190.76 feet the Northeast corner of said 21.81 acre tract and the Southeast corner of that certain 160 acre tract described as ANG-4 in a deed from TIN, Inc., to Crown Pine Timber I LP dated October 30, 2007 and recorded in Document No. 2007-00237018 in the Deed Records of Angelina County, Texas, a concrete monument found for corner witnessed by a 15" Pine (obt) bearing S 09° 02' W 7.31 feet and a 38" Pine (obt) bearing S 74° 17' W 14.35 feet;
- (2) N 00° 05' 38" W with the East boundary line of said 160 acre tract, at 1899.23 feet the Northwest corner of the said 234.16 acre tract and a Southwest corner of that certain 1807.966 acre tract described in a deed from Blue Sky Timber Properties LLC, to Brushy Creek Timber XII, LLC dated March 18, 2004 and recorded in Volume 1947 on Page 254 of the Deed Records of Angelina County, Texas, a 5/8" rod found for corner on the South side of a dirt road (private), said rod witnessed by a 6" Pine (obt) bearing S 33° 24' W 5.53 feet, a 14" Pine (obt) bearing N 85° 46' W 19.35 feet, and a 14" Pine (obt) bearing N 42° 22' W 26.47 feet;

THENCE six calls with the North boundary line of the said 234.16 acre tract, the South boundary line of the said 1807.966 acre tract, and meandering along within and sometimes on the South side of the said dirt road (private) as follows:

- 1) S 35° 49' 08" E 314.45 feet, a 5/8" rod found for corner;
- 2) S 45° 53' 43" E 860.29 feet, a 5/8" rod found for corner;
- 3) S 42° 12' 30" E 300.05 feet, a 5/8" rod found for corner;

- 4) S 69° 23' 48" E 610.07 feet, a 5/8" rod found for corner;
- 5) N 88° 43' 11" E 435.06 feet, a 5/8" rod found for corner;
- 6) S 60° 34' 46" E, at 26.71 feet a 1/2" pipe set for corner witnessed by a 5/8" rod bearing S 60° 34' 46" E 158.37 feet;

THENCE S 08° 09' 02" E severing the said 234.16 acre tract, at 2306.85 feet intersect the South boundary line of the said 234.16 acre tract and the North right-of-way line of the aforesaid State Highway No. 103, a 1/2" pipe set for corner witnessed by a concrete right-of-way monument bearing S 78° 09' 11" E 206.88 feet;

THENCE three calls with the South boundary line of the said 234.16 acre tract and the North right-of-way line of the said State Highway No. 103 as follows:

- 1) N 78° 09' 11" W 1495.57 feet, a concrete right-of-way monument found for corner;
- 2) N 11° 54' 44" E 39.46 feet, a concrete right-of-way monument found for corner;
- 3) N 78° 15' 07" W, at 752.86 feet the point and place of beginning and containing 117.08 acres of land, more or less.

Basis of Bearings: A West boundary line of that certain 234.16 acre tract described in a deed from Red River Nacogdoches TRS LP dated November 3, 2010 and recorded as Document No. 201-00278599 of the Deed Records of Angelina County, Texas (deed call - N 07° 54' 43" W 1190.76 feet - found concrete monuments 1190.76 feet apart).

PIN: 13456

Description of Proposed

Reinvestment Zone Continued

THE FOLLOWING REAL PROPERTY LOCATED IN THE COUNTY OF ANGELINA, STATE OF TEXAS:

BEING all that certain tract or parcel of land lying and situated in Angelina County, Texas, out of the MILTON GARRETT SURVEY, ABSTRACT NO. 14, being all a part or portion of that certain 234.16 acre tract described in a deed from Red River Nacogdoches TRS LP dated November 3, 2010 and recorded as Document No. 201-00278599 of the Deed Records of Angelina County, Texas, to which reference is hereby made for any and all purposes, and the said tract or parcel being described by metes and bounds as follows, to wit:

BEGINNING S 78° 15' 07" E 752.86 feet, S 11° 54' 44" W 39.46 feet, and S 78° 09' 11" E 1495.57 feet from a concrete monument found for the Southwest corner of the aforesaid referred to 234.16 acre tract and the Southeast corner of that certain 21.81 acre tract described in Contract of Sale and Purchase from The Veterans Land Board of Texas and Larry R. Callison, dated October 31, 1985 and recorded in Volume 609 on Page 371 of the Deed Records of Angelina County, Texas, a 1/2" pipe set for corner in the North right-of-way line of State Highway No. 103 (volume 85, page 233), said pipe witnessed by a concrete right-of-way monument bearing N 78° 09' 11" W 1495.57 feet;

THENCE N 08° 09' 02" W severing the said 234.16 acre tract, at 2306.85 feet intersect the North boundary line of the said 234.16 acre tract and the South boundary line of that certain 1807.966 acre tract described in a deed from Blue Sky Timber Properties LLC, to Brushy Creek Timber XII, LLC dated March 18, 2004 and recorded in Volume 1947 on Page 254 of the Deed Records of Angelina County, Texas, a 1/2" pipe set for corner in a dirt road (private), said pipe witnessed by a 5/8" rod bearing N 60° 34' 46" W 26.71 feet;

THENCE five calls with the North boundary line of the said 234.16 acre tract, the South boundary line of the said 1807.966 acre tract, and meandering along within and sometimes on the South side of the said dirt road (private) as follows:

- 1) S 60° 34' 46" E 158.37 feet, a 5/8" rod found for corner;
- 2) N 81° 17' 39" E 935.10 feet, a 1/2" pipe found for corner;
- 3) S 58° 40' 37" E 665.17 feet, a 5/8" rod found for corner;
- 4) S 51° 17' 01" E 520.03 feet, a 5/8" rod found for corner;
- 5) S 87° 22' 56" E, at 238.38 feet the Northeast corner of the said 234.16 acre tract, a Southeast (or South) corner of said 1807.966 acre tract, and an angle corner in the West boundary line of that certain 24.814 acre tract conveyed in a deed from John R. Winston, III Family Corporation to Jim R. Alexander dated November 1, 2001 and recorded in Volume 1479 on Page 53 of the Deed Records of Angelina County, Texas (see volume 1238, page 489 for description), a 1/2" pipe found for corner on the East side of Newman Road;

THENCE with the East boundary line of the said 234.16 acre tract, the West boundary line of said 24.814 acre tract, the West boundary line of that certain 2.83 acre tract described in a deed from John R. Winston, III, Family Co. I, Ltd. to Lori L. Wijntjes dated July 14, 2003 and recorded in Volume 1801 on Page 228 of the Deed Records of Angelina County, Texas, and the East side of the said Newman Road as follows:

- 1) S 01° 34' 44" W 67.75 feet, a 1/2" pipe found for corner;
- 2) S 08° 08' 43" E 588.31 feet, a 1/2" pipe set for corner;
- 3) S 08° 09' 02" E, at 1497.36 feet the Southeast corner of the said 234.16 acre tract and the Southwest corner of the said 2.83 acre tract, a 1/2" pipe found for corner on the North right-of-way line of the aforesaid State Highway No. 103, said pipe witnessed by a concrete right-of-way monument bearing S 78° 11' 26" E 115.47 feet and a concrete monument bearing S 78° 22' 21" E 345.19 feet;

THENCE five calls with the South boundary line of the said 234.16 acre tract and the North right-of-way line of the said State Highway No. 103 as follows:

- 1) N 78° 11' 26" W, at 1083.85 feet pass on line a concrete right-of-way monument, at 1984.29 feet a concrete right-of-way monument found for corner;
- 2) N 12° 08' 14" E 59.46 feet, a concrete right-of-way monument found for corner;
- 3) N 78° 31' 09" W 99.94 feet, a concrete right-of-way monument found for corner;
- 4) S 10° 21' 49" W 60.58 feet, a concrete right-of-way monument found for corner;
- 5) N 78° 09' 11" W, at 206.88 feet the piece of beginning containing 117.08 acres of land, of which total approximately 2.03 acres lie within the right of way of the said Newman Road.

Basis of Bearings: A West boundary line of that certain 234.16 acre tract described in a deed from Red River Nacogdoches TRS LP dated November 3, 2010 and recorded as Document No. 201-00278599 of the Deed Records of Angelina County, Texas (deed call - N 07° 54' 43" W 1190.76 feet - found concrete monuments 1190.76 feet apart).

PIN: 132740